

## **Drumset Audition Requirements for Jazz Band**

A maximum of two drummers will be placed in each ensemble with an additional spot for someone to play vibes if available.

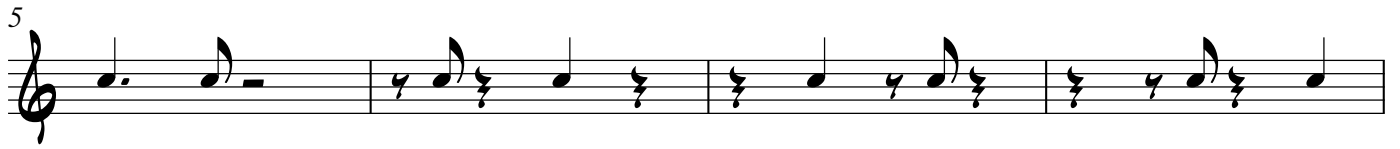
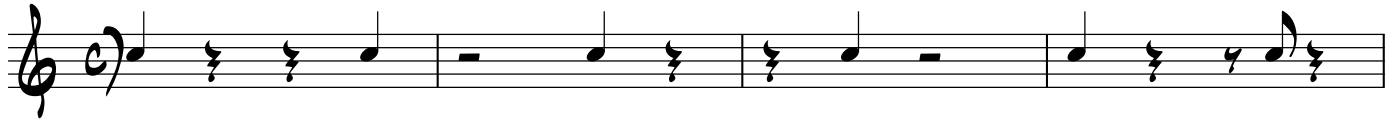
A drumset will be provided, but you need to bring a stick bag equipped with at least one pair of appropriate size drumsticks, wire brushes, and mallets.

### **Audition requirements**

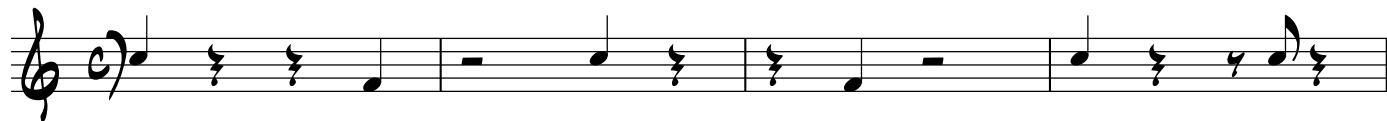
Be prepared to play #1-3 along with “Freddie the Freeloader” recording available on the website.

1. Play comping rhythms page with your left hand on the snare drum while playing a standard jazz time pattern (right hand ride cymbal, BD softly on all 4 beats, HH with left foot on 2 and 4).
2. Play comping rhythms 1 with bass drum while playing standard rock pattern on HH (8ths on HH with 2 and 4 on SD)
3. Play comping rhythms 2 with LH Snare Drum and Bass Drum while playing jazz time on the ride cymbal and 2 and 4 on the HH with your left foot.
4. Be prepared to demonstrate any of the following styles (slow, medium, and fast tempi):
  - Jazz
  - Bossa Nova - Samba
  - 8<sup>th</sup> Note Rock
  - 16<sup>th</sup> Note Funk
  - 3/4 Jazz Waltz
5. Play through the attached chart in a medium swing style at about 100 bpm setting up ensemble and background figures with appropriate kicks and fills.

# COMPING RHYTHMS 1 (1 PART)



# COMPING RHYTHMS 1 (2 PART)



# Drumset Sample Chart Reading for Jazz Audition

Drums

JAZZ

$\text{♩} = 115$

BRUSHES :

*p-mp*

2 3 4

5 6 7 8

2 TO STICKS

STICKS BRASS

ENS.

IN 4

9 10 11 12 13

*mf*

ENS.

TO BRUSHES

14 15 16 17 18 19

*mp*

20 BRUSHES

20 21 22 23

*p*

TO STICKS

STICKS BRASS

ENS.

24 25 26 27

*mp* *mf*

ENS.

SAXES

FILL

28 29 30 31

*mp*

32 IN 2 > FILL IN 4

32 33 34 35 36 37

*f-ff* *mf*

Detailed description: This staff contains measures 32 through 37. It begins with a circled measure number '32' and the instruction 'IN 2'. The notation includes eighth notes with accents and a 'FILL' section. The dynamic starts at *f-ff* and ends at *mf*. There are also 'IN 4' markings.

1 2 SAXES & TBNS

38 39 40 41

ENS. > *ff*

Detailed description: This staff contains measures 38 through 41. It starts with a circled '1' and the instruction '2 SAXES & TBNS'. The notation features eighth notes with accents and 'ENS.' markings. The dynamic is *ff*.

42

42 43 44 45

*mp* 4

Detailed description: This staff contains measures 42 through 45. It starts with a circled measure number '42'. The notation includes a half note and rests. The dynamic is *mp* and there is a '4' marking.

6 8

46 47 48 49 50 51

Detailed description: This staff contains measures 46 through 51. It consists of rests with '6' and '8' markings above them.

ENS. (54)

52 53 54 55 56 57

*mf* *f* ENS. ^

Detailed description: This staff contains measures 52 through 57. It starts with a circled measure number '54' and the instruction 'ENS.'. The notation includes eighth notes with accents. Dynamics are *mf* and *f*. It ends with 'ENS. ^'.

TO BRUSHES

58 59 60 61

*mp*

Detailed description: This staff contains measures 58 through 61. It features eighth notes with accents and 'TO BRUSHES' text. The dynamic is *mp*.

62 BRUSHES

62 63 64 65 66

*p* *mp*

Detailed description: This staff contains measures 62 through 66. It starts with a circled measure number '62' and the instruction 'BRUSHES'. The notation includes rests. Dynamics are *p* and *mp*.

BRASS (70)

67 68 69 70 71

ENS. > *mf* ENS. ^

Detailed description: This staff contains measures 67 through 71. It starts with the instruction 'BRASS' and a circled measure number '70'. The notation includes eighth notes with accents and 'ENS.' markings. Dynamics are *mf* and *mf*.

SAXES (75)

72 73 74 75

*mp* *p* *ff*

Detailed description: This staff contains measures 72 through 75. It starts with the instruction 'SAXES' and a circled measure number '75'. The notation includes eighth notes with accents and 'ENS.' markings. Dynamics are *mp*, *p*, and *ff*.